

Phi Psi Rag

An Occasional Correspondence
of the South Plains Alumni Association
Winter, 2006 www.texastechhipsi.org



Founder's Day Set for Dallas

Date: Saturday, February 18, 2006

Location: Royal Oaks Country Club
7915 Greenville Ave, Dallas

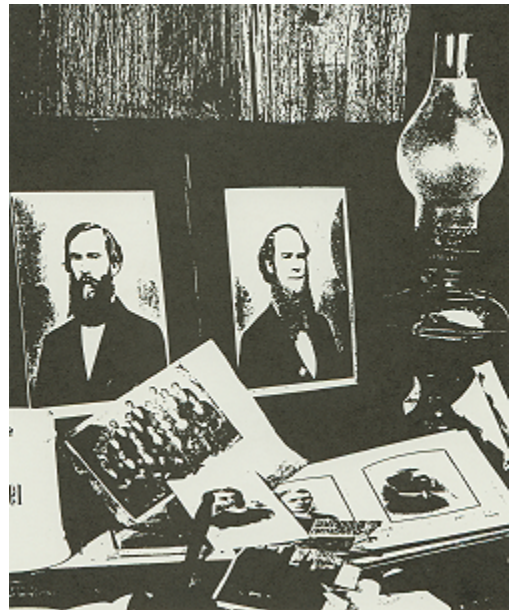
Time: 6 to 7:00 Reception/Social
7:00 Dinner
8:00 Presentations
9:00 More Socializing

Dress: Coat and Tie

Price: \$45 per person for Alumni
\$20 per person for Undergraduates

RSVP and Mail Checks to: (please include your email address)

Don Weldon
305 Bennett Road
Bristol, Texas 75119
972-846-9929 dweldon@azonemail.net



Don Weldon has a special weekend of events celebrating the 154th anniversary of our beloved fraternity. Our founding fathers would be proud to see the fun we have as our bonds are re-affirmed. In addition to the events Saturday evening there will be an afternoon social starting at 1 p.m. Details for this will be provided when you receive your confirmation. Let's make this the best reunion ever. Even if you do not plan to attend Brother Weldon asks that brothers send him updates about themselves and a "sketch of your life" since college. Direct those to Don at his email above.



Alumni Business Meeting set for Dallas by Jay Kinnison (Tx Beta '61)

In association with the Founder's Day Dinner scheduled for that evening alumni and undergraduates will gather at Frank Bray's home in Dallas for the Spring House Corporation and Alumni Association meeting. A presentation will be made on the plan to use the Endowment Fund Scholarship account to finish paying down the mortgage on the chapter house. Our Summer trip to Cabo San Lucas will also be discussed. Please make plans to attend.

Date/Time: 10 a.m. Saturday, February 18, 2006

Location: Frank Bray's Home, 6514 Laurel Valley Road, Dallas, Texas

Directions: Go east from Preston Road on Arapaho to the first light. Turn left (north) on Golden Creek; go five blocks to Laurel Valley Road, turn right, home is 4th house on the right side. Frank's phone number is 972-386-7792



Our Alumni Care

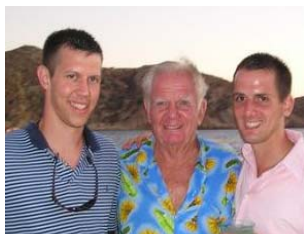
by Cliff Watt (Texas Beta '64)

“Making a Difference

A big thanks to all our supporters for their contributions in 2005. We have a record 91 Sustaining Members who contributed \$9,400.00 toward maintaining the chapter house. Over and above donations in the amount of \$30,400 to the Texas Beta Housing Fund (all non-deductible) and \$18,600.00 to the Bill E. Collins Scholarship Fund with the National Endowment of Phi Kappa Psi. We end the year with a combined donation of \$59,400.00 for the year. What a great group!

Thank you all for your gifts without which Texas Beta wouldn't be on GreekCircle nor where there be over 45 undergraduate brothers.

Our goal this year is to buy our mortgage through our Endowment Fund Scholarship account. As we repay the money borrowed we are able to offer scholarships and help the chapter. The remaining debt will be less than \$60,000.00 on our \$350,000.00 lodge (which doesn't include the interior furniture, computers, or backyard basketball and volleyball courts. Quite an accomplishment.



Interested in Cabo 2006? Pirate Captains Needed

Although there has been interest expressed by many brothers about a trip to Cabo we need to identify someone who is willing to serve as trip captain. Brian Carr will provide assistance and coordinate the pre-trip details but someone must be "on the ground" to coordinate with Jerry Nelson's staff. Unless someone steps forward there is a risk that no trip will be scheduled.

If interested please contact Brian at bha@wiredbrush.com. If you have not been to Cabo the trip is unforgettable. To see images of past trips go to the web site and click on the link near the bottom of the first page.

Sign up to be a Sustaining Brother

With almost 900 men initiated into Texas Beta it is clear that there is a large pool of financial power available to accomplish our 2006 goals. With only a \$100 annual pledge you join with other brothers in helping maintain and build what has become the positive character of our chapter. Go and sign up on the web site today.

As America faces tough challenges can you find a way to help us in preparing the men who will lead our country someday? The goal of bettering the chapter through academic scholarships, house projects, and support for alumni association events is made possible. While about 91 brothers have made their annual donation many have not been heard from. Included in this letter is a pledge form that you can complete and return as a sign of your support for what we are trying to do.



News and Notes

- *the Chapter pledged 18 men for the Fall semester and initiated 15. Chapter membership now stands at 45 men.
- *For the Spring 2005 semester the chapter finished with the second highest GPA among fraternities with a 3.06. This is better than the all men's average and also ranked the chapter higher than 7 out of 12 sororities.
- *Brother Herschel Holman (Tx. Beta '54) went to our chapter eternal on January 9, 2006. When many of us were in school Herschel owned Herschel's House of Pictures on College (now University) Avenue, across from the Tech campus and employed several of the undergraduate brothers. He maintained a fondness for and interest in the fraternity, and he attended the Phi Kappa Psi Founders Day Banquets in Dallas the past two years, 2004 and 2005.
- *The Grand Arch Council is scheduled for New Orleans, August 9-13, 2006

Question? Comment?

Let Us Know! Go to www.texastechhipsi.com and click on "Personal Profile" located under the Alumni menu.

Or Call Brian Carr at (806) 795-3911 office
(806) 794-6460 home